

MUTLU ALKALINE PENCIL BATTERY INTRODUCTION AND USER MANUAL



1. General Information

1.1. Model Classification

Alkaline Pencil Battery

1.2. Model Type

ANSI:15A IEC:LR6 Size: AA

2. Reference Standards

IEC60086-1:2021--Primary batteries - Part 1: General

IEC60086-2:2021--Primary batteries - Part 2: Physical and electrical properties

IEC60086-5:2021--Primary batteries - Part 5: Safety of batteries containing aqueous electrolyte

The batteries comply with the European Union battery directives.
This product complies with the battery directive (2006/66/EC) of the European Union.
The packaging materials comply with the European Union's directive on packaging materials and waste (94/62/EC).

3. Technical Specifications

Nominal Voltage	1.5 Volt	
Open Circuit Voltage	1.5 ^{+0.18} ₋₀ Volt	
Typical Weight	24±1 g	
Capacity (10mA 24h/d 0.8v)	3300 mAh (Reference)	
Terminals	Flat	
Storage Temperature Range	5-30 °C	
Shelf Life	120 months (Each battery will carry a manufacturing date code followed by month and year of manufacturing for domestic and expiry for export. Storage Temperature 20± 2 °C Storage Humidity 55± 20%)	

* Unused Mutlu Alkaline Pencil Batteries stored under proper storage conditions have a shelf life of 10 years.

4. Alkaline Pencil Battery Usage

4.1. Battery Placement

- Check your device where you will use the battery. Check the battery type and placement direction of the device you are going to use. Pay attention to the (+) and (-) polarity and always use the correct size and type of batteries specified by the device manufacturer.
- Open the battery compartment of the device in which you will use the battery. Most often it opens with a lid or slider.
- Close the battery compartment again and make sure it closes securely.

4.2. Battery Replacement

- Open the battery compartment of the device.
- Carefully remove the old batteries.
- Insert the new batteries as shown in Figure-1 below.
- Close the lid.
- Dispose of old batteries at recycling points, not in the trash.

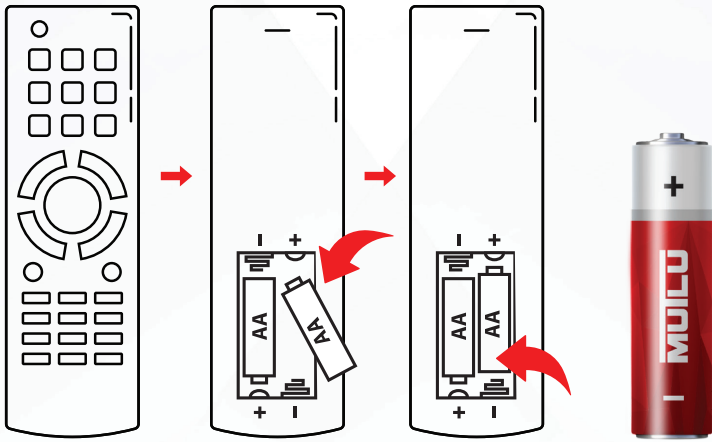


Figure -1- Battery Placement

5. Alkaline Pencil Battery Usage Information

- Keep batteries out of direct sunlight or high temperatures. Extreme temperatures can affect the performance of the battery and cause it to explode. Store batteries in a dry place at normal room temperature, do not put them in the refrigerator.
- Do not leave batteries in the device when not in use, otherwise they may discharge.
- The batteries are disposable, do not charge them.
- Do not use expired or deteriorated batteries.

6. Alkaline Pencil Battery Safety Information

- Do not cut or puncture the outer surface of the battery, as this may cause leakage or explosion.
- Beware of battery leakage. If you encounter leaked batteries, avoid contact with the skin. Chemicals in leaked batteries can be harmful. Carefully remove leaked batteries and recycle them properly.
- Do not attempt to charge the battery unless it clearly says "rechargeable" on it.
- Do not attempt to carry out repairs under any circumstances.

7. Points to be Considered During Transportation and Transportation of Alkaline Pencil Battery

- Carry the battery in its original packaging, if possible. This packaging prevents the batteries from coming into contact with each other and protects them from external impacts.
- When transporting the battery, make sure that the positive and negative ends on the case do not touch each other.

8. Consumer Rights

- If it is understood that the goods are defective, you have the optional rights provided to the consumer in Article 11 of the Consumer Law No. 6502.
- You can make your applications regarding your complaints and objections to the Consumer Courts and the Consumer Arbitration Committee.

Importer Company: MUTLU AKÜ VE MALZEMELERİ SANAYİİ A.Ş.
Adress: Tepeören Mahallesi, Eski Ankara Asfaltı Cad. No:210 34959 Tuzla – İstanbul/Türkiye
Phone :0850 80 80 258
Website: www.mutlu.com.tr

Manufacturer Company: FUJIAN NANPING NANFU BATTERY CO.,LTD.
Adress:109 Industry Road, Nanping, Fujian, P.R.China
Phone: (0086)-599-873 3158